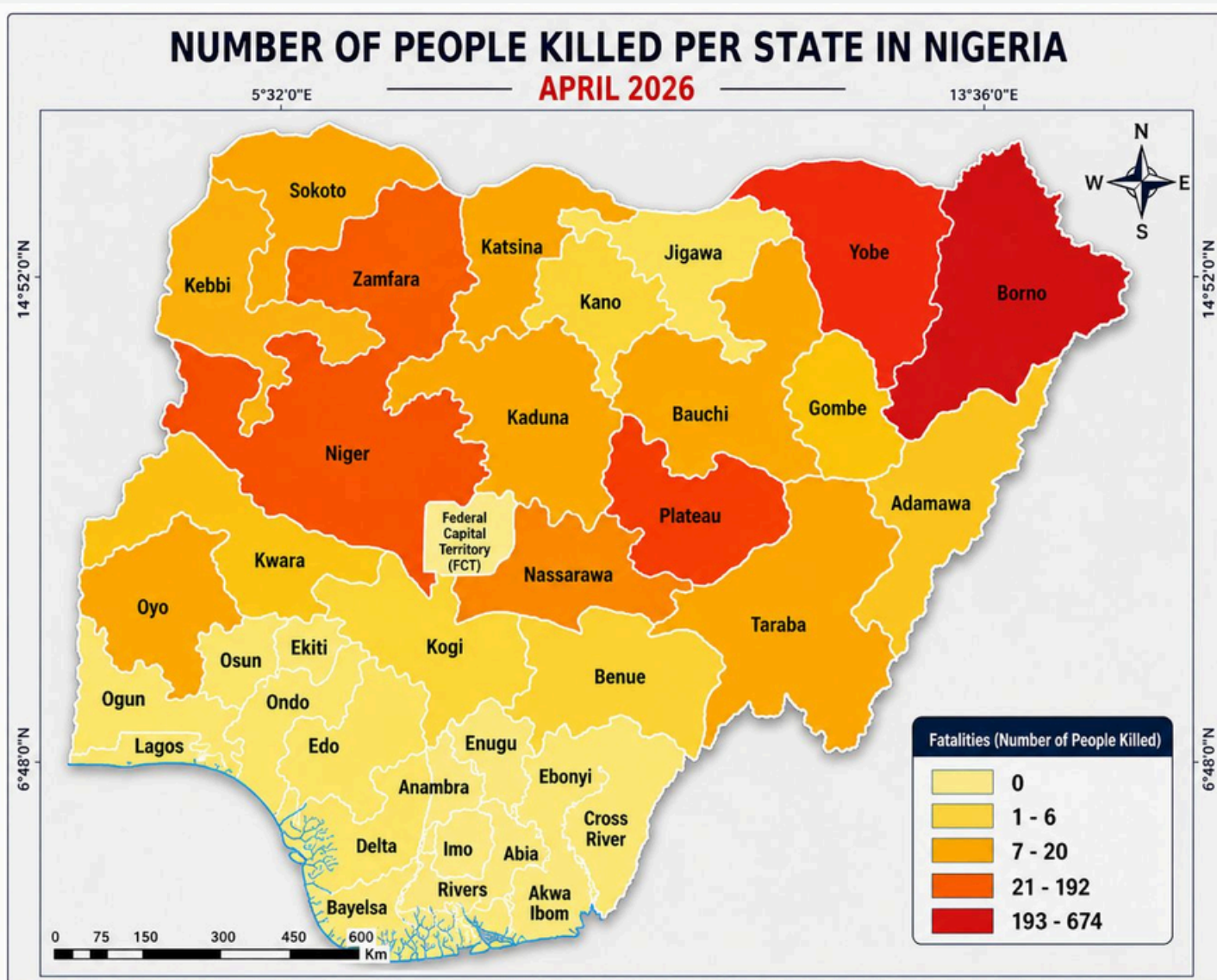


Incident Overview

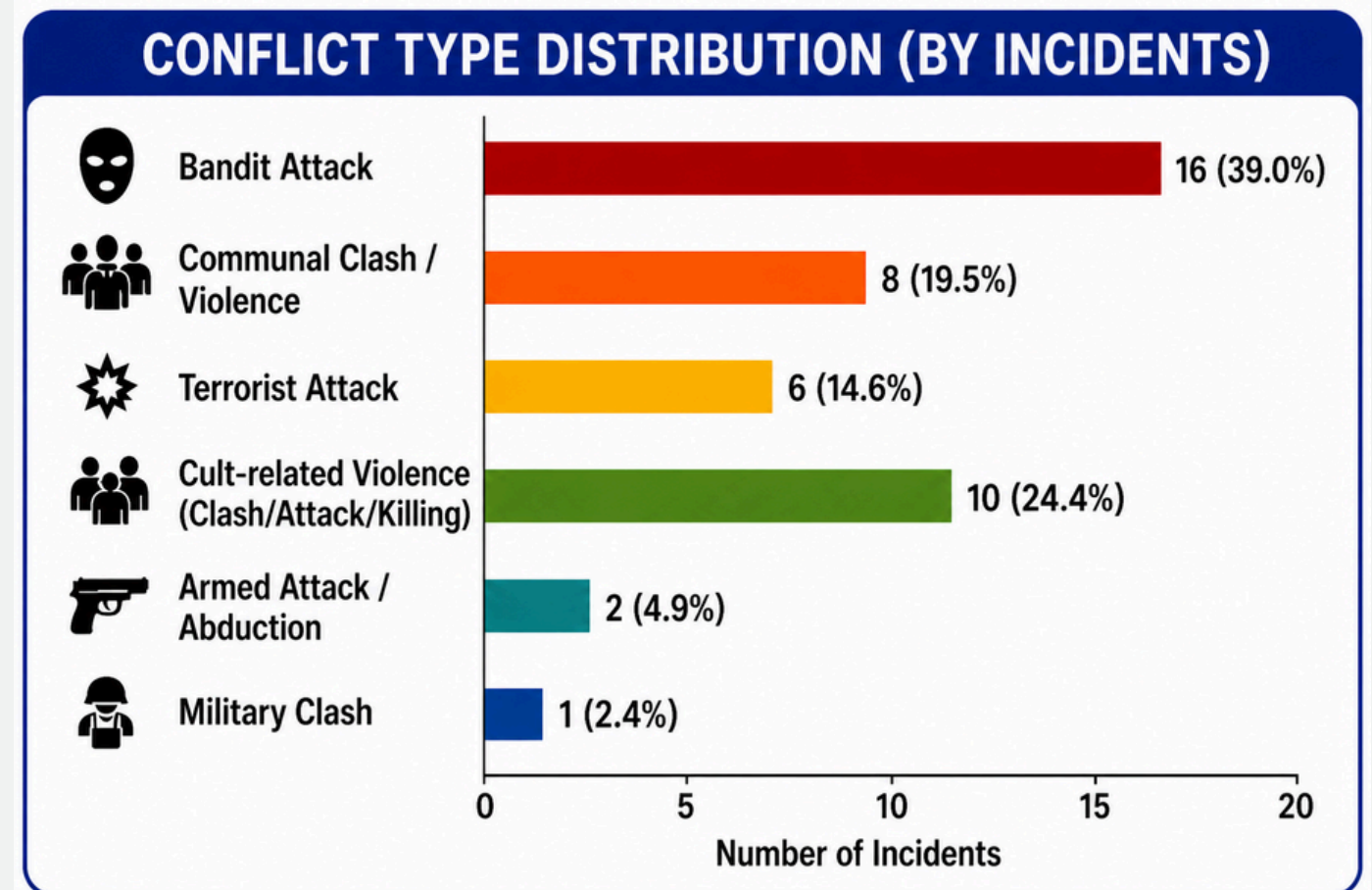
Nigeria's security situation in April 2026 shows a significant escalation in violence, with 71 incidents leading to 1,849 deaths, 194 injuries, 468 abductions, and 139 displaced households. The high number of fatalities and abductions highlights an intensifying humanitarian crisis, with kidnapping remaining a key strategy of armed groups and displacement reflecting increasing disruptions to livelihoods and community stability.

Spatial Distribution of Fatalities



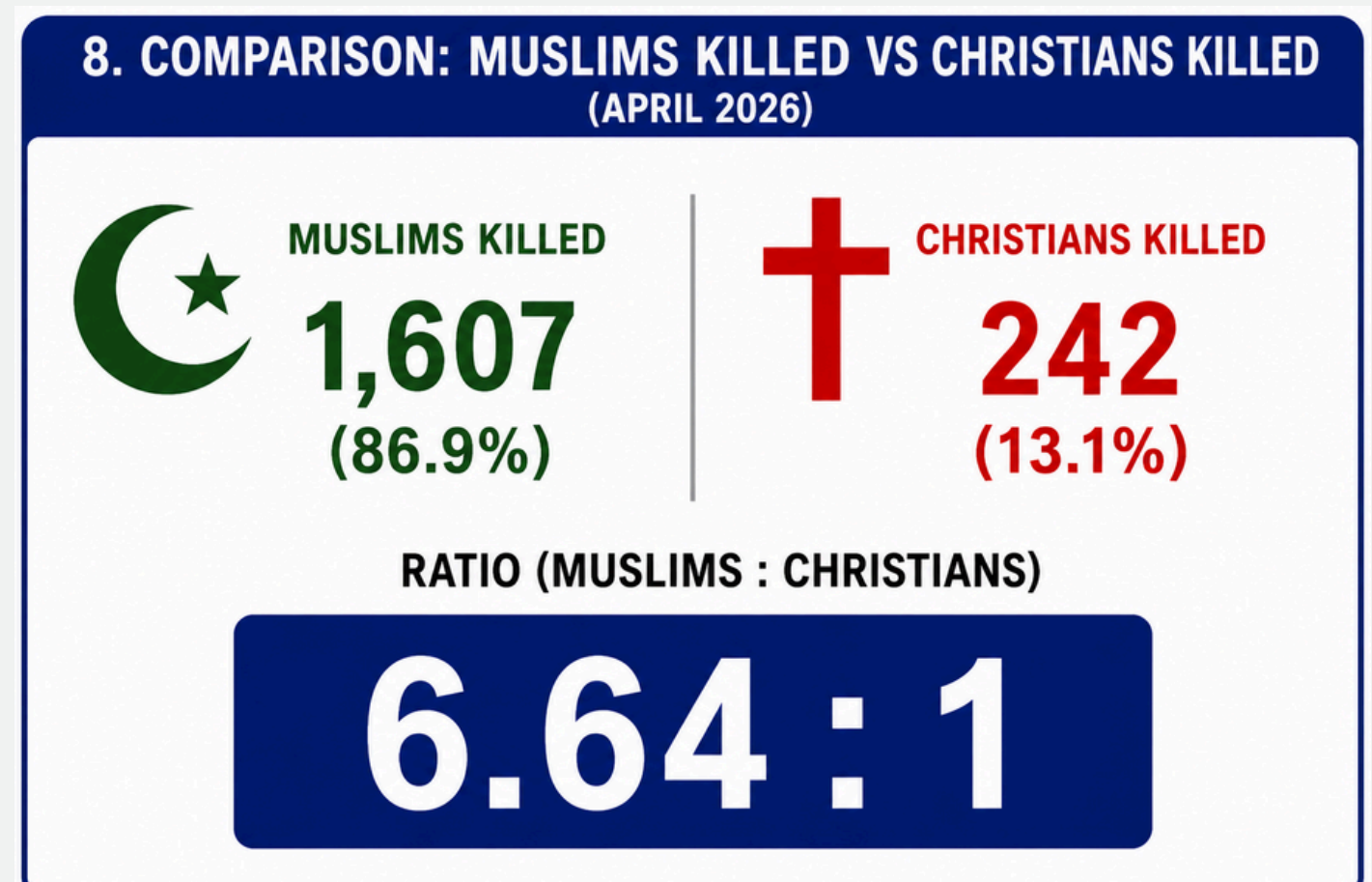
The distribution of fatalities across states reveals a clear concentration of extreme violence in northern Nigeria, with Borno recording by far the highest number of deaths and remaining the primary epicenter of insurgency-related attacks. Other heavily affected states, including Niger and Zamfara, experienced significant casualties largely driven by banditry and armed violence, while Plateau and Benue recorded substantial fatalities linked to persistent communal and farmer-herder conflicts. In contrast, most southern states reported relatively low death tolls. Overall, although incidents occur nationwide, the intensity and lethality of violence are overwhelmingly concentrated in the northern region.

Conflict Type Distribution



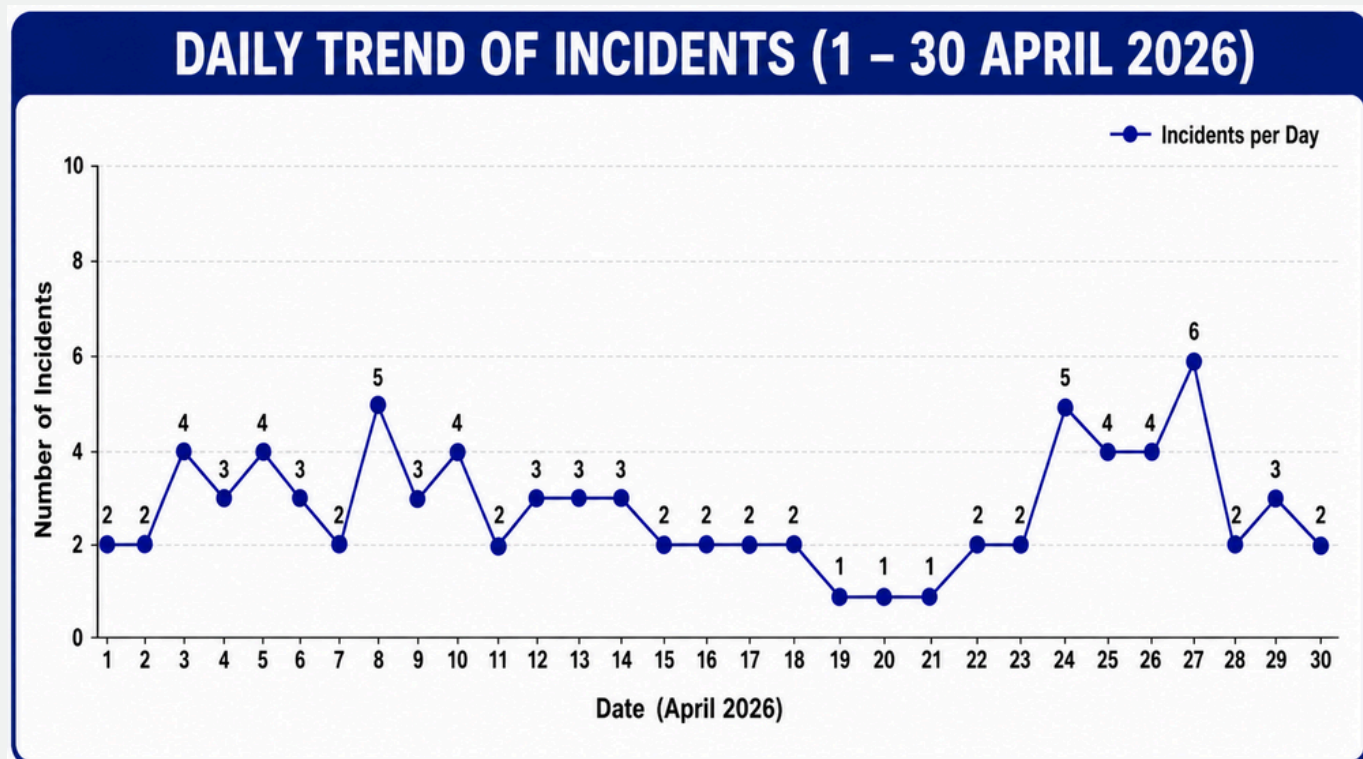
The structure of violence in April 2026 is dominated by banditry and armed attacks, highlighting a clear shift toward irregular and criminalized forms of conflict. Bandit attacks were the most prevalent (45.1%), followed by armed attacks (22.5%) and terrorist incidents (18.3%), while communal clashes and military operations accounted for smaller proportions. This pattern reflects a complex hybrid conflict environment where insurgency, criminal violence, and communal tensions coexist and reinforce one another. It also indicates increasing decentralization and unpredictability of security threats across regions. Consequently, addressing these challenges requires a coordinated approach that combines military action, law enforcement, and community-based interventions. Strengthening intelligence gathering and inter-agency collaboration will be critical to effectively respond to these evolving threats.

Christians Killed vs Muslim Killed



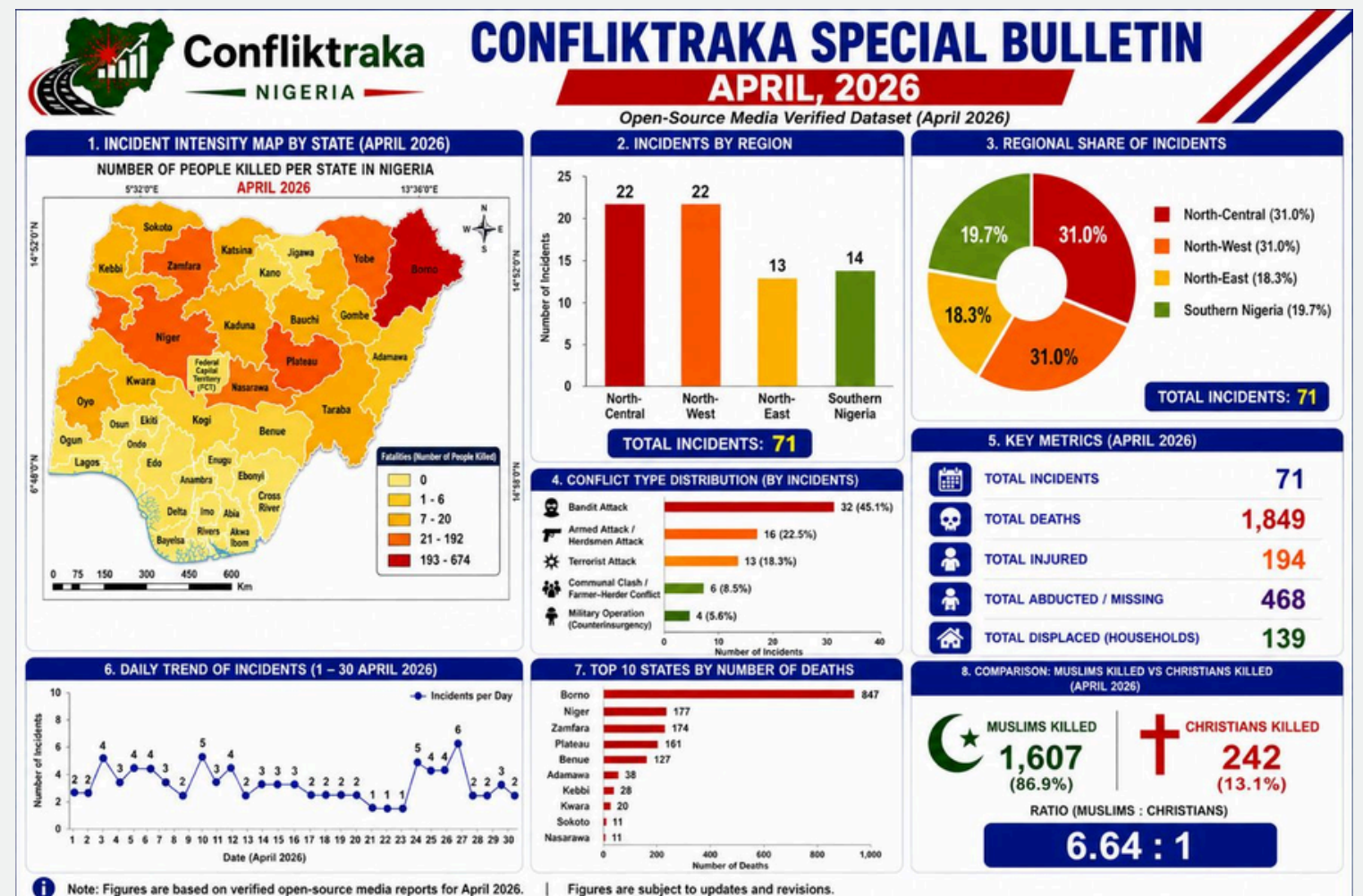
The comparison of fatalities by religious identity shows that 1,607 Muslims (86.9%) were killed, compared to 242 Christians (13.1%), resulting in a ratio of 6.64 to 1. This disparity largely reflects the geographic concentration of violence in predominantly Muslim northern regions, rather than solely religious targeting. However, in mixed regions such as Plateau and Benue, communal conflicts often align with religious identities, leading to more directly differentiated impacts. This pattern underscores the importance of addressing both regional insecurity and localized identity-based tensions in conflict response strategies. It also highlights the need for conflict-sensitive interventions that account for demographic realities.

Daily Trend of Incidents



The daily trend of incidents throughout April 2026 shows a consistently active security environment, with incidents occurring almost every day. Daily counts generally ranged between 2 and 5 incidents, with noticeable peaks reaching 6 incidents toward the end of the month. Early and mid-month periods showed moderate fluctuations, while the final week experienced a visible increase in activity. The absence of prolonged low-incident periods indicates sustained operational capability of armed groups, making containment and prediction increasingly challenging.

Summary



Nigeria's security situation in April 2026 shows a sharp rise in violence and lethality, with 71 incidents resulting in 1,849 deaths, alongside injuries, abductions, and displacement. The high death toll reflects more intense and coordinated attacks, particularly in northern regions.

Violence remains heavily concentrated in the North, with Borno as the most affected state, followed by Niger, Zamfara, Plateau, and Benue. While incidents occurred nationwide, the deadliest impacts were largely in northern Nigeria, with the South recording lower fatalities, though still experiencing localized insecurity.

The North-Central and North-West regions recorded the highest incidents, while the North-East remained the most lethal due to insurgency. Overall, the situation highlights a worsening and complex security environment, driven by banditry, terrorism, and communal conflicts, requiring coordinated security responses and improved intelligence.

Conclusion

The security situation in Nigeria in April 2026 reflects a worsening and increasingly complex conflict environment, marked by high fatalities, widespread incidents, and significant humanitarian consequences. While insecurity remains most intense in northern regions, its spread across all geopolitical zones highlights the need for a comprehensive national security strategy. Without coordinated and sustained interventions, the trends observed in April are likely to persist, posing serious challenges to stability, development, and human security in Nigeria.