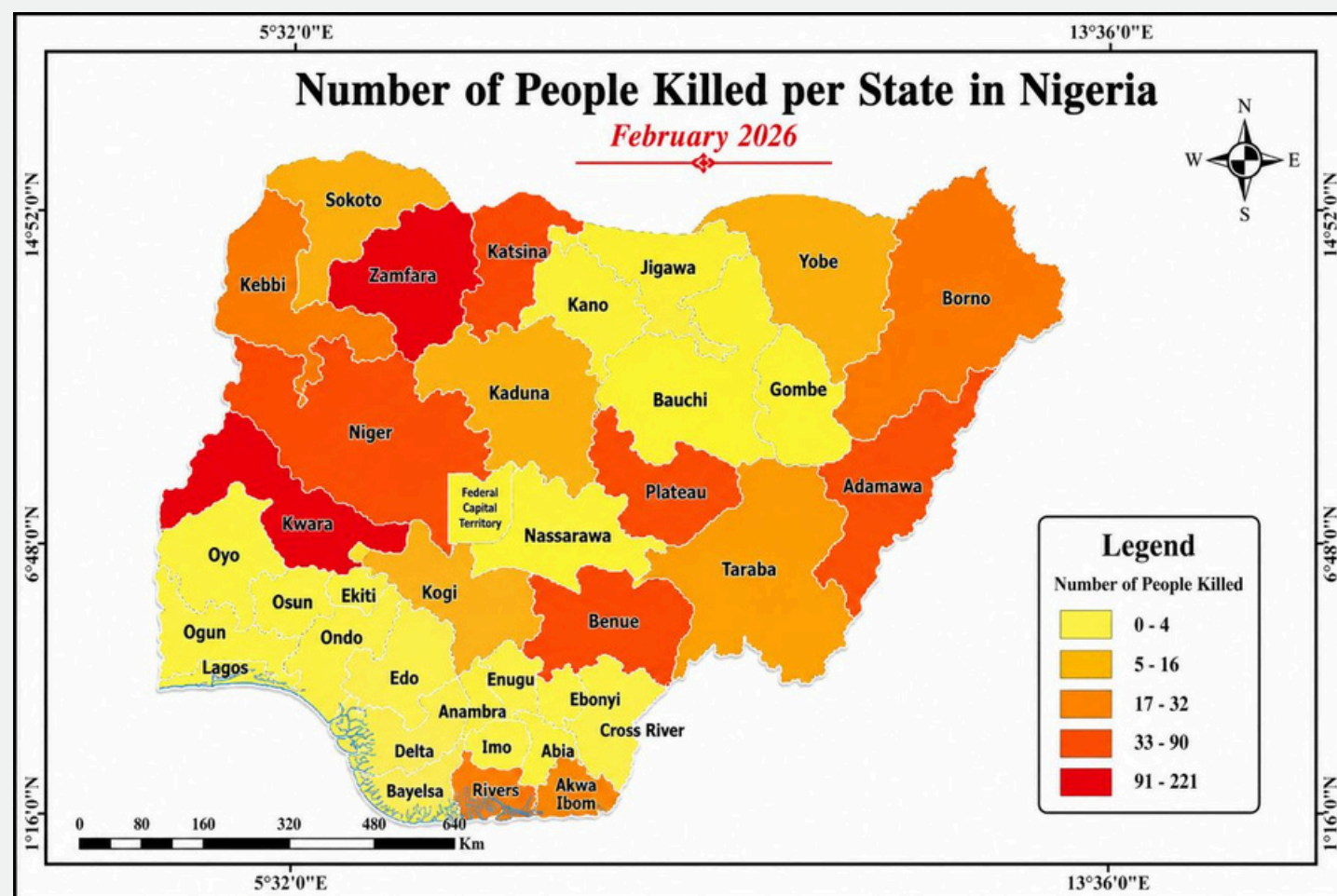


Incident Overview

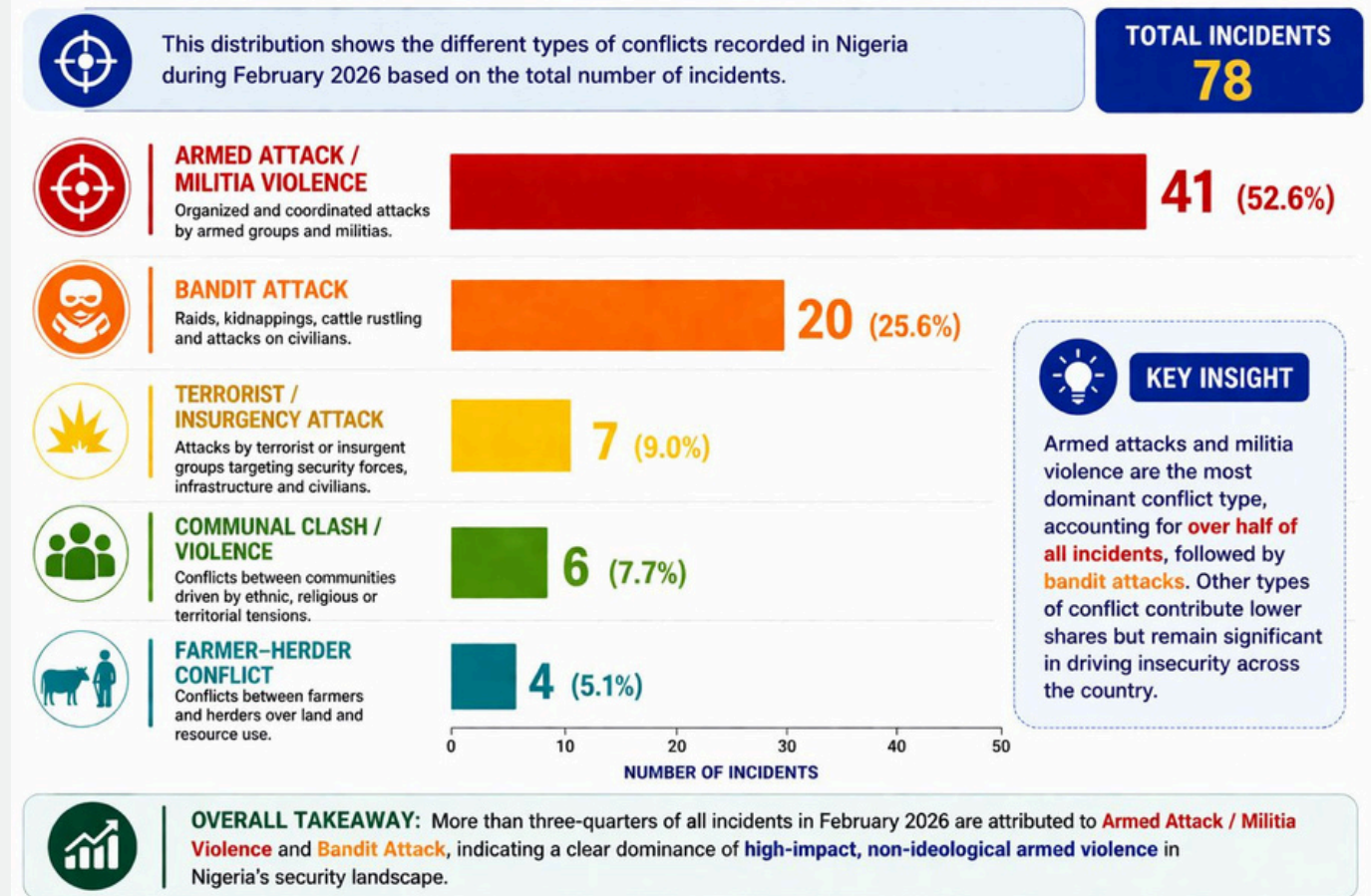
Nigeria recorded a total of 78 conflict-related incidents, reflecting sustained insecurity across multiple regions. These incidents resulted in 992 fatalities and 52 injuries, indicating a high lethality rate relative to the number of occurrences. The pattern suggests that while incident frequency remains moderate, the intensity and fatal outcomes are significantly elevated.

Spatial Distribution of Fatalities



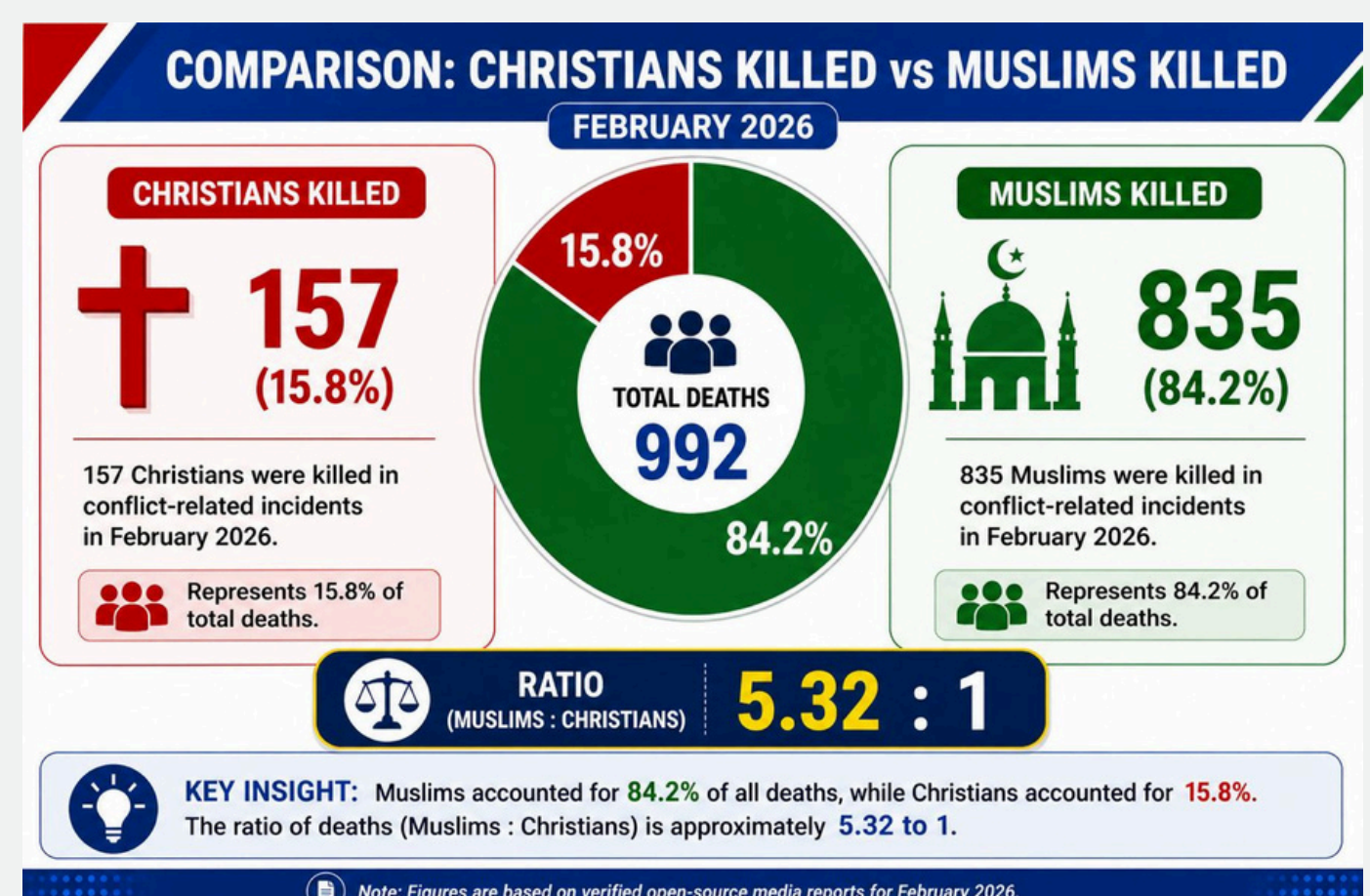
The geographic distribution of fatalities further illustrates the uneven impact of violence across states, with a clear clustering in specific high-risk areas. Kwara State recorded the highest number of deaths at 221, followed by Zamfara with 151 deaths and Niger State with 90 deaths. Other significantly affected states include Adamawa (83 deaths), Benue (79 deaths), Katsina (78 deaths), Kebbi (74 deaths), and Plateau (65 deaths), while Sokoto (32 deaths) and Borno (27 deaths) recorded comparatively lower but still notable fatality figures. This concentration of fatalities in North-Central and North-West states highlights localized escalation patterns and suggests that certain areas are experiencing more intense and deadly forms of violence than others.

Conflict Type Distribution



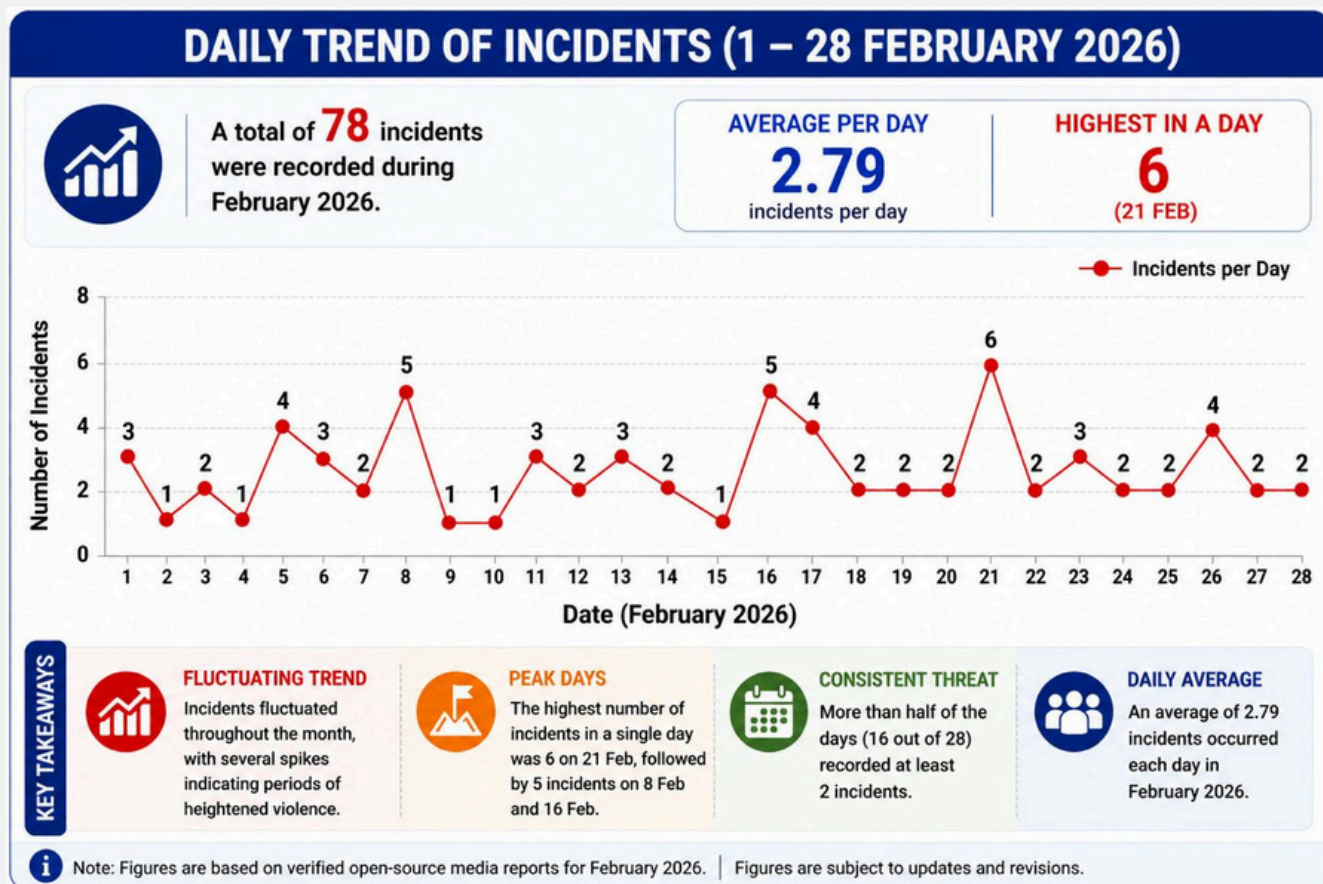
In February 2026, the conflict landscape in Nigeria was overwhelmingly dominated by armed attacks and militia violence, which accounted for over half of all recorded incidents, indicating a strong presence of organized and coordinated armed groups. Banditry followed as the second most prevalent form of violence, contributing significantly to insecurity, particularly in vulnerable rural areas. In contrast, terrorist and insurgency-related attacks were relatively limited in frequency, though still strategically important. Communal clashes and farmer-herder conflicts occurred at lower levels, reflecting underlying socio-economic and resource-based tensions. Overall, the distribution highlights a clear shift toward high-impact, non-ideological armed violence, emphasizing the growing influence of militia groups and criminal networks in shaping Nigeria's security dynamics.

Christians Killed vs Muslim Killed



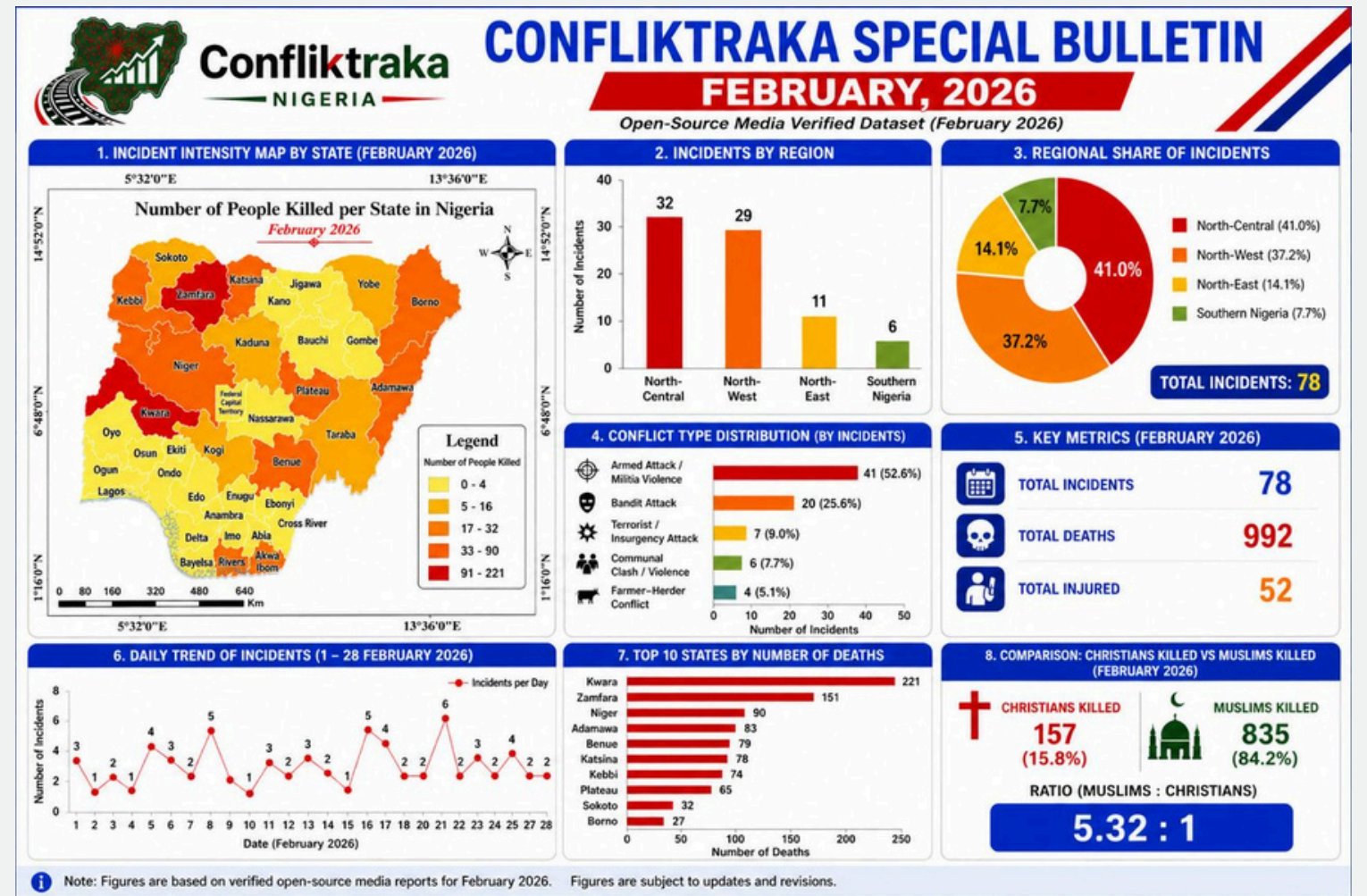
In February 2026, a total of 992 deaths were recorded from conflict-related incidents in Nigeria, with Muslims accounting for 835 deaths (84.2%) and Christians accounting for 157 deaths (15.8%), resulting in a ratio of approximately 5.32 to 1. This disparity is largely influenced by the geographical concentration of violence in northern regions, particularly the North-Central and North-West, where most incidents occurred and where Muslim populations are more prevalent. Overall, the pattern reflects the spatial distribution of conflict rather than purely identity-based targeting, highlighting the need for targeted, region-specific security interventions to reduce casualties across all affected communities.

Daily Trend of Incidents



The daily pattern of incidents in February 2026 shows a consistent but fluctuating level of insecurity, with 78 incidents recorded and an average of 2.79 incidents per day. While most days experienced low-to-moderate activity (1-3 incidents), there were notable spikes, including a peak of 6 incidents on 21st February. Importantly, over half of the days recorded at least two incidents, indicating a persistent and continuous threat environment. The trend reflects sustained operational activity by armed groups, with no prolonged decline in incidents, highlighting the need for continuous and adaptive security responses.

Summary



Nigeria recorded 78 conflict incidents in February 2026, resulting in 992 deaths and 52 injuries, indicating a highly lethal security environment. Violence was concentrated in the North-Central and North-West regions, which together accounted for the majority of incidents.

Armed attacks and militia violence (52.6%) and banditry (25.6%) were the primary drivers of insecurity, while other conflict types occurred at lower levels. Fatalities were heavily concentrated in key states such as Kwara and Zamfara, highlighting localized hotspots.

The daily trend showed persistent activity, averaging 2.79 incidents per day with occasional spikes. Muslims accounted for 84.2% of deaths, compared to 15.8% for Christians, largely reflecting the geographic distribution of violence.

The situation is defined by sustained, high-impact violence driven by armed groups, requiring targeted and region-specific security interventions.

Conclusion

The February 2026 security outlook reveals a persistent and highly lethal conflict environment, with violence concentrated in northern regions and driven primarily by armed groups and bandit networks. The consistency and intensity of incidents indicate limited disruption of threat actors and a risk of continued escalation. Addressing this trend will require targeted, intelligence-driven, and region-specific interventions to effectively reduce fatalities and restore stability.